

EW WALL BOX

Compliance

- Comply with ANSI/EIA RS-310-D、IEC60297-2、DIN41494;
- PART1; DIN41494;PART7

Material

- SPCC Cold Rolled Steel;
- Thickness: Mounting profile: 1.5mm,others: 1.0mm

Colour

- EW.■■■■■0■■■:RAL7035
- EW.■■■■■1■■■:RAL7021

Loading Capacity

- Static loading: 30KG
- Protection category:Ip20

Finish

- Pretreated steel coated with textured , polyester powder paint

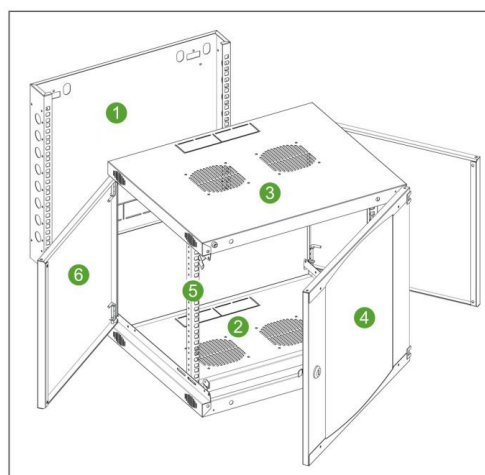


WALL BOX

EW RAPID SINGLE SECTION

Feature

- Knocked down and smaller packaging, easy to transport and carry.
- Front and rear frame of specially-made structure, better stability.
- Using 13 screw set to assembly the whole cabinet, it spends only 10mins by one people to operate.
- It has a pilot pin to help close the front door to avoid mismatch, and the front door can be changed to another way to open.
- The cable can be entered from top, bottom, back of the cabinet, suitable to every situation. The incoming cable hole patented, it can be adjusted, and has the round edge to avoid the cutting to the cable.
- Side panel can be opening in rotated way or disassembling, having a space enough to wiring, the side panel can be locked safely from inside without the locker and key.
- Maximum bearing capacity: 30KG.



Main Part

S/N	Specification	Qty	Material	Surface Finish	Remark
1	Back frame	1	SPCC t1.0	Powder coated	----
2	Bottom	1	SPCC t1.0	Powder coated	----
3	Top cover	1	SPCC t1.0	Powder coated	----
4	Front door	1	4MM toughed glass door/ SPCC t1.2	Powder coated	Small lock
5	19 " rails frame	1	SPCC t1.5	Powder coated	----
6	Side panel	2	SPCC t1.0	Powder coated	----

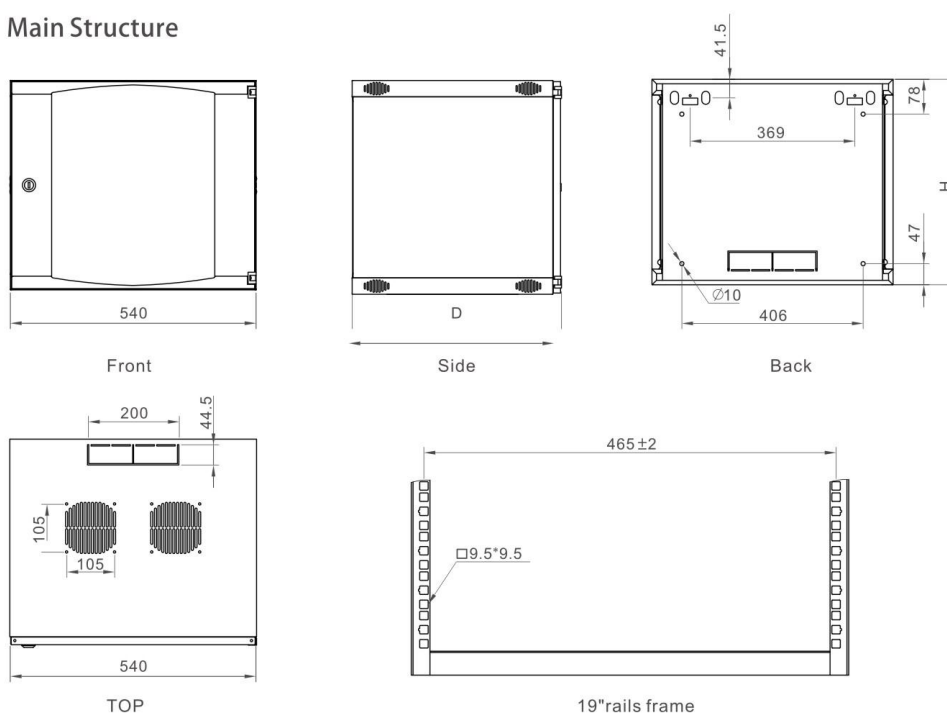
Ordering Information

Model No.	Capacity (U)	Width (mm)	Depth(D) (mm)	Height(H) (mm)	Disassembled packing dimension(MM)	Assembled packing dimension(MM)
EW.5406. ■00	6	540	450	327	570*215*485	550*460*340
EW.5606. ■00			600		570*165*635	550*610*340
EW.5409. ■00	9	540	450	460	500*215*590	550*460*470
EW.5609. ■00			600		590*205*615	550*610*470
EW.5412. ■00	12	540	450	593	570*205*655	550*460*605
EW.5612. ■00			600		590*205*635	550*610*605
EW.5415. ■00	15	540	450	725	570*205*790	550*460*740
EW.5615. ■00			600		630*205*745	550*610*740

WALL BOX

EW RAPID SINGLE SECTION

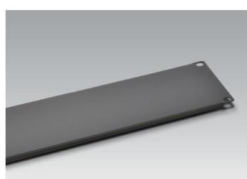
Main Structure



May Install the fitting



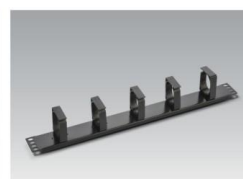
Cooling fan
See page 159



Blanking panel
See page 162



Cantilever shelf
See page 160



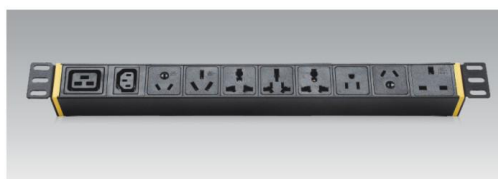
cable management
See page 163



M6 Screws & nets
See page 164



Earthing kit
See page 165



PDU
See page 153